

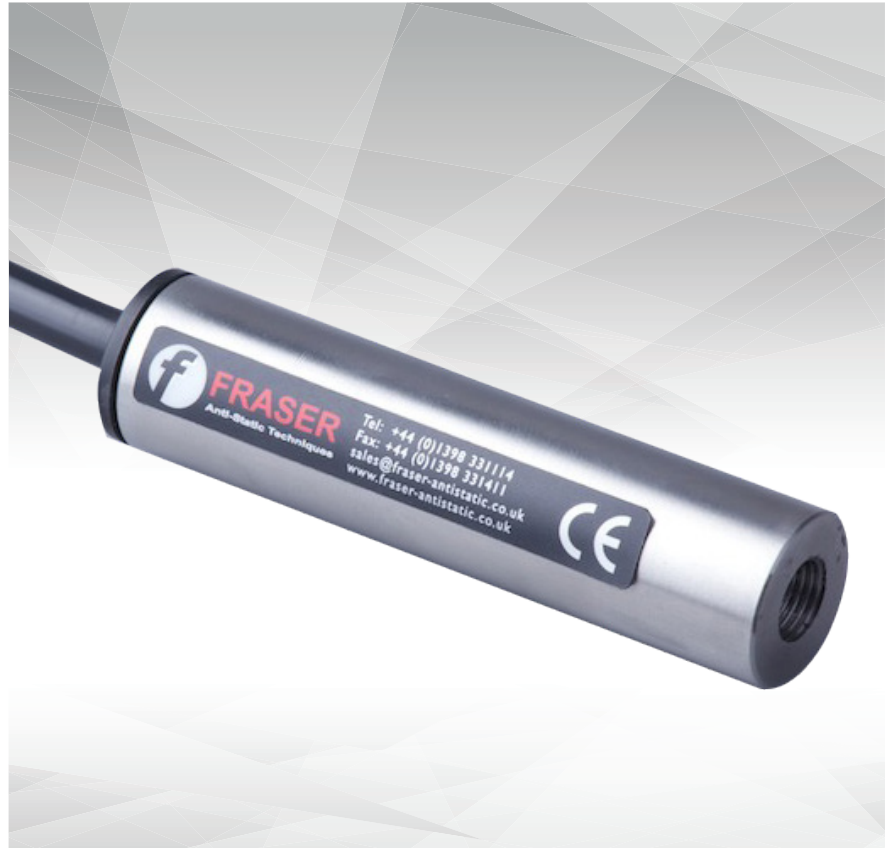
# POWER UNITS

## HP ILC IN-LINE CONNECTOR

The In-Line Connector allows the operator to have a cable disconnect feature anywhere in the cable system. It can also be used to lengthen existing cables.

Versatile member of the Fraser HP Connector series.

- > Versatile use with standard Fraser HP connectors 5.5 kV and 6 kV.
- > Stainless steel construction with internal PTFE insulation.
- > Cable length 2 m unless otherwise specified. Maximum length 10 m if within total load of power unit.
- > High voltage side totally enclosed for safer operation .
- > Allows the customer:
  - to extend existing cables.
  - to have a cable disconnect between Power Unit and Static Eliminator.
  - to repair damaged cables.



### How it works:

The HP connector from the static eliminator screws into the open end of the In-Line Connector, which in turn is connected to the Power Unit.

The high voltage must be turned off when a connection or disconnection is made.

